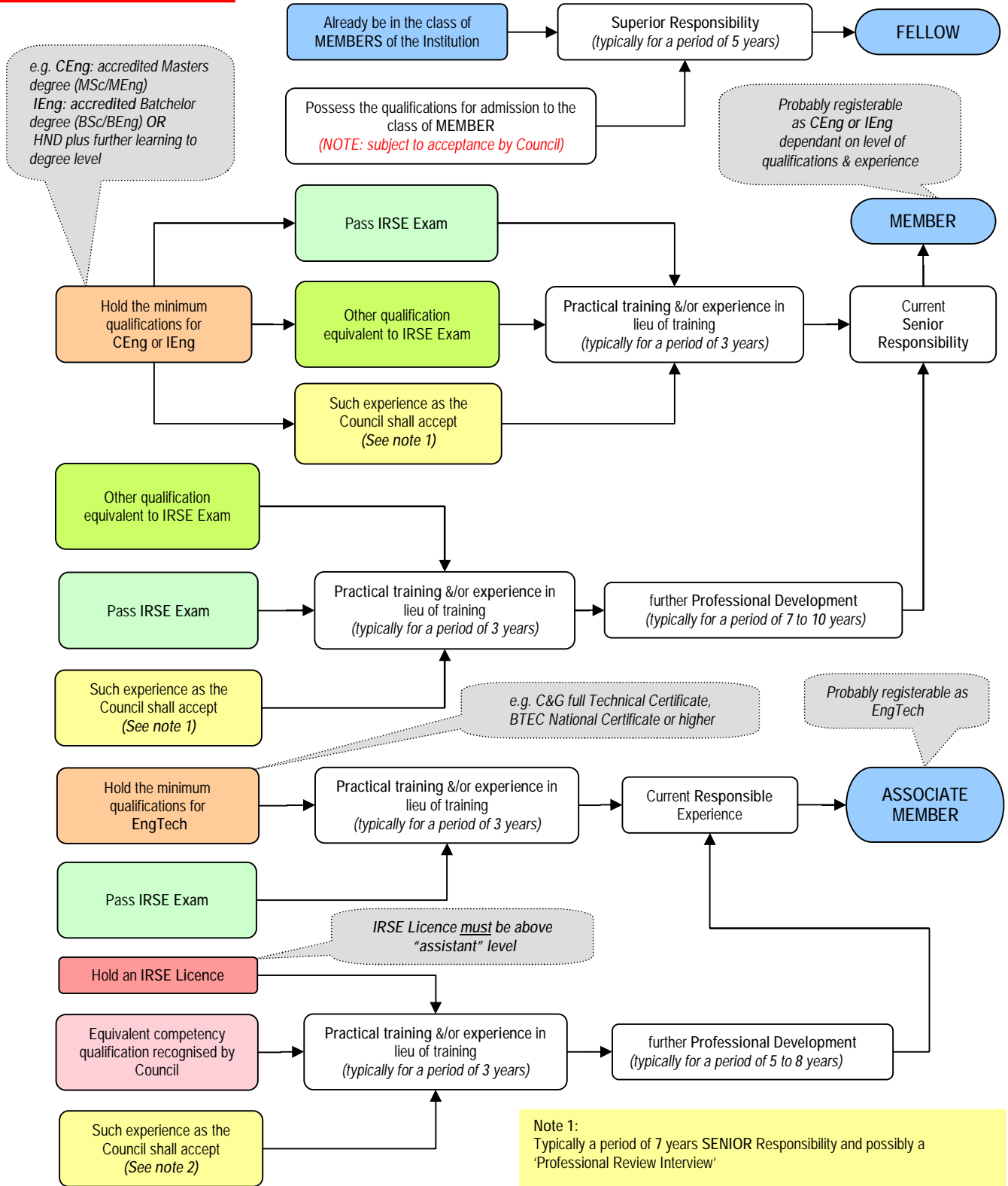


MEMBERSHIP ROUTES

This flow chart provides guidance on the various routes to membership of the Institution. Full details of the requirements are contained within the Bye-Laws of the Institution which are available on the IRSE Web Site.

Corporate Grades



Key: CEng = Chartered Engineer (awarded by EngC(UK))
IEng = Incorporated Engineer (awarded by EngC(UK))
EngTech = Engineering Technician (awarded by EngC(UK))

Note 1:
Typically a period of 7 years SENIOR Responsibility and possibly a 'Professional Review Interview'

Note 2:
Typically a period of 7 years RESPONSIBLE experience and possibly a 'Professional Review Interview'